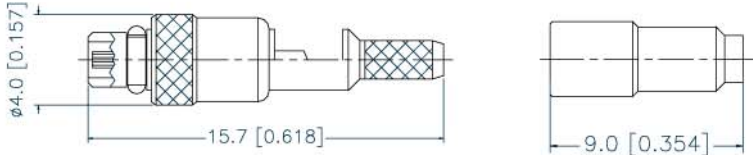




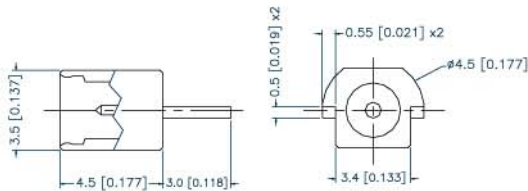
## MMCX , Plug RP Crimp/Solder Type

- Part Number : **MMCX1-4023-RP**
- Impedance : 50
- Cable : As Specified By Customers



## MMCX, Jack RP For Edgecard Mount

- Part Number : **MMCX1-4025-RP**
- Impedance : 50



## MMCX, Plug RP Crimp Type, Right Angle

- Part Number : **MMCX2-5090-RP**
- Impedance : 50
- Cable : As Specified By Customers

